

BLUES NEWS

THE NEWSLETTER OF THE KENTUCKIANA BLUES SOCIETY
 "...PRESERVING, PROMOTING AND PERPETUATING THE BLUES."

Louisville, Kentucky

October 2012

Incorporated 1989



Gordon Bonham photo courtesy of Gordon Bonham. Deb Landolt photo courtesy of www.tomdelorenzo.com

On Saturday, November 17, the Kentuckiana Blues Society (KBS) will celebrate its 24th anniversary with a show at the Vernon Club. This year's solo/duo contest winners, Joe DeBow and Danny Henderson, will open the show. Joe and Danny will represent the KBS at the International Blues Challenge next February in Memphis. They will be followed by the Gordon Bonham Blues Band of Indianapolis, IN. Gordon (pictured above left) performed for several years with legendary blues mandolin musician James "Yank" Rachell and played at the opening of the Rock and Roll Hall of Fame in Cleveland, OH, sharing the stage with Pinetop Perkins and Robert Lockwood Jr. The headliner for this year's show is Long Tall Deb of Columbus, OH. Deb Landolt (pictured above right) and her band released their debut album "Diamonds on the Desert Floor" to critical acclaim in 2010. It was chosen as one of the top five CD's of the year by the Blues Foundation. It continues to be a favorite on Sirius/XM Radio, frequently featured on "B.B. King's Bluesville." Doors open at 6:00 pm and the Vernon Club is located at 1575 Story Ave. Additional details are available on the KBS website at <http://kbsblues.org/>

IN THIS ISSUE

| | | | |
|--|------------|---|-----------|
| KBS News and Contacts | 2 | Joe Debow Band at Kingfish | 7 |
| Letter From The Prez | 3 | 2012 Garvin Gate Blues Festival | 8 |
| Germantown Schnitzelburg Blues Fest | 4-5 | Guitar: The Instrument That Rocked the World | 9 |
| New Music Reviews | 6-7 | Kentuckiana Blues Calendar | 10 |



October 2012
Volume 25 Number 10

EDITOR
Natalie Carter

CONTRIBUTORS

Bob Brown
Keith Clements
Nelson Grube
William Peeples
Les Reynolds
Gary Sampson
Patty Tench

Address Change?

If you move, let us know your change of address. The Post Office does not forward bulk mail.

The views expressed by the authors and advertisers are their own. Contributions by anyone offering pertinent and thoughtful discussion on blues issues are welcomed.

www.kbsblues.org
news@kbsblues.org

KBS BOARD OF DIRECTORS

Rocky Adcock
Emeritus

Roger Wolford
Emeritus

Bob Brown

Danny Henderson

Natalie Carter

Cole Kiser

Keith Clements

Jim Masterson

Joe DeBow

Les Reynolds

Lamont Gillispie

Gary Sampson

Nelson Grube

Debbie Wilson

Chris Grube



Blues News

The monthly newsletter of the
Kentuckiana Blues Society

©2011 Kentuckiana Blues Society
Louisville, Kentucky



Official Printers
of the
Kentuckiana Blues Society

www.volufirms.com

CALL FOR INFORMATION ABOUT:

GENERAL INFO

Gary Sampson (502) 724-9971

KBS EVENTS

Keith Clements (502) 451-6872

MEMBERSHIP/NEWSLETTER

Natalie Carter (502) 893-8031

NEWSLETTER ADVERTISING

Keith Clements (502) 451-6872

CLUB/BAND CALENDAR

Gary Sampson (502) 724-9971

We appreciate your support and welcome your input. If you have any comments, suggestions, ideas, etc., contact us at this address:

Kentuckiana Blues Society
P. O. Box 755
Louisville, KY 40201-0755

As usual, please check your mailing label to see if your membership will expire soon. Our single membership is a bargain at only \$20.00 US per year. Double membership (two members at the same address, two membership cards, one newsletter) is only \$25.00 US per year, and we now offer a special band rate of \$30 per year, which includes one newsletter plus a membership card for each band member. If you see a notice on your mailing label, that means that it's time to renew!

KBS LEADERSHIP FOR THE YEAR 2012:

Gary Sampson – president
Debbie Wilson – vice-president
Les Reynolds – secretary
Chris Grube – treasurer

KBS MONTHLY MEETING

If you are interested in reviewing new blues music, come on out to the KBS monthly board meeting (held the first Wednesday of each month at 7:00 PM at The Pizza Place in Hikes Point) and take your pick! We receive promo releases from the major blues labels as well as regional and local bands. If you review a CD, it's yours to keep!

USED AND COLLECTIBLE
STRINGED INSTRUMENTS
NEW, USED AND VINTAGE GUITARS AT
REASONABLE PRICES



Guitar
EMPORIUM

1610 Bardstown Road
Louisville, KY 40205

STORE HOURS:
MONDAY-FRIDAY 10:00 TO 7:00
SATURDAY 10:00 TO 5:00

Jimmy Brown
Owner

(502) 459-4153
(502) 454-3661

www.guitar-emporium.com





Photo by Cheryl Cissell

It's our last call for entries in the International Blues Challenge (IBC) Best Self-Produced CD contest. The winning CD will represent the Kentuckiana Blues Society and be sent to the Blues Foundation in Memphis. The winner will be announced next February at the IBC. CD's can be sent to the Kentuckiana Blues Society Best Self-Produced CD Contest, PO Box 755, Louisville, KY, 40201 and must be received by October 1. More information on the contest is available at the Blues Foundation website at <https://www.blues.org/>.

On Fridays from 5:00 to 9:00 pm during the month of October, the Galt House will host "Bourbon and Blues on the Rooftop" at the downtown hotel. The event will feature live blues, bourbon drink specials and a great view of the city from the hotel's rooftop garden and terrace. I'll announce the weekly schedule in my Tuesday emails and on our website at <http://kbsblues.org/>.

David Harrod and his Here for the Party band have hosted a Wednesday night blues jam the last couple of years in Lexington at O'Neill's Irish Pub. That jam recently moved to the Cheapside Bar & Grill located at 131 Cheapside Street. The jam takes place from 8:00 to 11:00 pm, is free and open to all blues musicians.

Notable shows this month include the Afterbeat Festival at the Clifton Center October 4 through October 6. Taj Mahal will make an appearance on Thursday, October 4 and Tyrone Cotton will be there both Thursday and Friday. Get all the details online at <http://www.cliftoncenter.org/>. The Big Rock Jazz & Blues Festival returns to Cherokee Park on Sunday, October 7. Acts this year include Miss Lissa & Co., Dick Sisto and Steve Allee and Don Braden with Todd Hildreth, Tyrone Wheeler and Jonathan Higgins. The festival will be from 2:00 to 7:00 pm. On Tuesday, October 9, the little blues band from Texas know as ZZ Top will be at the Louisville Palace. Tickets range in price from \$33 to \$100 and are available online and at the Louisville Palace box office. The Garvin Gate Blues Festival takes place Friday and Saturday, October 12 and 13 at the intersection of Garvin Place and Oak Street. The headliners this year are Sugar Ray & the Bluetones and Nora Jean Wallace. Their schedule is on the web at <http://garvingatebluesfestival.com/>. Remembering Our Roots, a benefit in tribute to Ricky Mason, Tim Krekel and Steve Ferguson will be at Stevie Ray's on Sunday, October 14. The music gets started at 4:00 pm and includes the Midwest Creole Ensemble, the Jim Masterson Band, members of TKO, the Stray Cat Band featuring Kentucky Headhunter Greg Martin, Little T&A, Mr. Jimmy and The Tarnations. Proceeds benefit the Cabbage Patch Settlement House Performing Arts Program. A portrait of Ricky, Tim and Steve painted by Jim Masterson will be raffled off at the event. On Sunday, October 21, the first in a series of Sunday blues shows at the Expo Five will feature music by Rosie Ledet and the Zydeco Playboys, the Stray Cat Band featuring Kentucky Headhunter Greg Martin, The Jaywalkers and Lazy Eleven. Tickets are \$8 in advance and \$10 the day of the show. The Expo Five is located at 2900 South 7th Street Road and is five minutes away from Churchill Downs. Oliver Wood used to play guitar with Tinsley Ellis. He has since joined forces with his brother Chris and they now call themselves The Wood Brothers and will be at Headliners Music Hall on Saturday, October 27.

The KBS board reluctantly accepted the resignations of board members Joe Spalding and Pam Dean at our last two meetings. We wish them both well and thank them for their valuable service to the blues society. We are always looking for volunteers and we meet the first Wednesday of the month at the Pizza Place in Hikes Point. Our meetings start at 7:00 pm and are open to the public.

Jim Masterson's portrait of Tim Krekel, Rick Mason and Steve Ferguson will be raffled off at the "Remembering Our Roots" tribute at Stevie Ray's on October 14th to benefit the Cabbage Patch.



2012 Germantown –Schnitzelburg Blues Festival



Andy & The Rockers

Photo by William Peeples



Little T&A (w/guest Sylvia Walters)

Photo by William Peeples



10:30 ... Little T&A



Little T&A (w/guest Michael Webb)

Photos by William Peeples



The Bluesbenders

Photos by Keith Clements

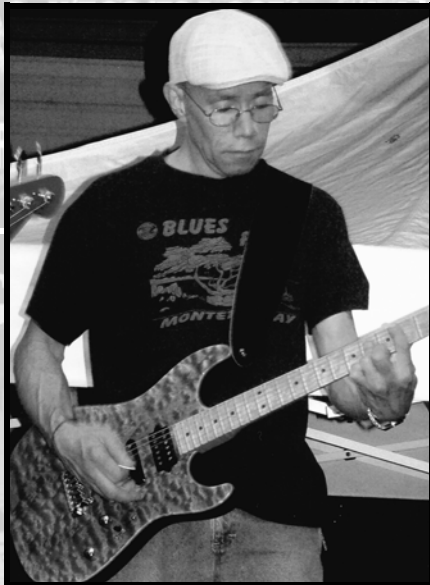


2012 Germantown –Schnitzelburg Blues Festival



Photos by Keith Clements

1101 E. Burnett Dog House Kitchen



Photos by Keith Clements

KingBees (w/guest Rob Pickett)



Photo by Keith Clements



Photo by Bob Brown

Lamont Gillispie & 100 Proof Blues closed out the festival...and a good time was had by all!



New Music Reviews!



Chris Watson Band
Pleasure and Pain
Gator Music

It has been quite some time since I have been this excited about a CD release by an artist that was unknown to me. "Pleasure and Pain" by the Chris Watson Band is an amazing treat for a lover of blues music.

At only 26 years old, Chris Watson shows excellent command of a variety of blues styles on the guitar, and he has a voice to match. It doesn't hurt either that the rest of the band members are talented musicians as well. There are two primary styles of blues found on the album, the Stevie Ray Vaughn Texas style and the Josh Garrett Louisiana style of blues, and the tracks mostly alternate between these two styles. From the album notes, one can see that the two styles were recorded with two different bands backing Chris up. This is a CD I won't want to drop out of my rotation of favorites any time soon.

"Pleasure and Pain" is going to be a tough act to follow when this fine group releases their next CD. I strongly recommend you give this one a listen.

Patty Tench

**PLEASE check your MAILING LABEL
for your renewal date,
and please be sure to keep your membership current.**

**"TIME TO RENEW" will appear at the top of the label when your membership is expiring. PLEASE NOTE: IT
COULD TAKE UP TO A COUPLE OF WEEKS TO GET YOUR NEW CARD. If you need it sooner, leave a voice
message
for Natalie at 893-8031 or send an email to membership@kbsblues.org.**

All Louisville and Regional Music

Crescent Hill Radio.com

No Commercials
Locally Produced Shows

AM 1650
Inside Crescent Hill



Get More Blues News
From the KBS
Monthly Feature
"I've Got a Mind
to Ramble in the
LOUISVILLE MUSIC NEWS

The Saturday Night
BLUES PARTY
with Kevin Yazell

Saturdays 9pm

WFPK 91.9
RADIO LOUISVILLE

Be sure to stick around after The Blues Party for
Woody's Roadhouse, the juke joint of the mind,
airing every Friday and Saturday at midnight.

91.9 WFPK and live on the web at wfpk.org :: Commercial Free :: Listener Supported



Paul Thorn
What The Hell Is Goin' On?
Perpetual Obscurity Records

First, this is not a bona-fide full-on blues recording. It has blues elements in it, for sure. That being said, though, this CD is excellent. What else would you expect from Paul Thorn?

Second, the title track, penned by (and featuring some wicked slide guitar from) Elvin Bishop, is perhaps a good question to ask. Not the way it's asked in the song--which is about social unrest and wondering why all the worldwide chaos--but as in, "what's this CD doing being reviewed in the KBS newsletter if it's not so all-fired blues?"

Well, Southern Rock has had elements of blues in it since it became a named and popular genre. Allman Brothers. Texas rockers ZZ Top. Bonnie & Delaney. And this is Southern Fried, no doubt, with lots of slide. (And all the songs are covers, too--not a Thorn original on this dozen-tune set list, which includes songwriters such as Lindsey Buckingham, Ray Wylie Hubbard, Rick Danko and Allen Toussaint, and others. Thorn treats each as if he owns them.)

So, where's the blues? Let's go find it. His treatment of Hubbard's "Snake Farm" with Bill Hinds' evil-sounding, greasy slide guitar, comes close. Next comes the minor-key "Shelter Me Lord," by Buddy and Julie Miller--which also comes close; although it's more gospel-like, with fantastic backup vocals from the McCrary sisters. (Which sisters? Individuals aren't named.) The title track is southern rock personified, with its greasy slide and thumping beat--and has some blues elements, perhaps. It's the best tune on the CD. "Walk in My Shadow" (Paul Rodgers, et al) has a recognizable blues chord progression. "Wrong Number" (Toussaint) has a slow blues type beat. "Jukin'" is kind of a funky-southern rock-sorta blues tune. And the final cut, "Take My Love With You" (Eli Reed/Charlie Barnwell) is an up-tempo, gospel-style number with a blues chord progression.

So, where's the blues? While it's not a blues CD per se, to borrow a phrase from a popular food product commercial: "It's in there."

Les Reynolds

Joe DeBow Band at Kingfish
July 22, 2012

Well time may not have stood still for some - and the river kept waving to shore - and Jimmy Brown kept moving as the Joe DeBow band took the stage on a "better than most evenings have been this summer" kind of night with the sun lowering in the west and a slight breeze coming off the water. The only dead fish around were inside Kingfish, as it should well be.

For three days I had been receiving FB posters on this event that stated there would be two guest artists at this presentation. I suspected a renoun slide player from the KBS would show up, or that one of the Bluescrue had been bought to show off or show up to play tambourine. Wrong! Soon as we saw them on stage I knew that I didn't know the drummer - (he's reportedly from Ohio and very good) - and that Jimmy Brown was the other guest advertised as he never stopped moving for the whole show. This is good.

Danny Henderson was having a Gibson night playing both a Gold Top Les Paul and a reddish/brown SG and having his way with whichever one he chose. Joe DeBow handled all the song selection and singing and the rhythm guitar chores. The audience - which numbered between 6 and 50 - was very appreciative - clapping their hands and stomping their feet like it was a live radio show - but kept their mouths busy with other things as their dinners arrived.

A very good show - the sound was near perfect and it was a great evening to enjoy dinner outdoors while being entertained with LIVE MUSIC. Thanks to Kingfish and The Joe DeBow Band!

Nelson Grube

Blue Sunday @ Expo Five

Rosie Ledet & THE ZYDECO PLAYBOYS

Stray Cat Blues Band
 featuring Greg Martin (Kentucky Headhunters)

The Jaywalkers
Lazy Eleven

Tickets available at the Expo Five Box Office
 2900 7th Street Rd / \$8 Advance / \$10 Day of Show
 Doors open at 5pm - Show starts at 5:30 - Sunday, October 21st

Bourbon & Blues
On the Rooftop

rooftop
 garden & terrace
 502-568-4264

BOURBON DRINK SPECIALS

Galt House introduces the Rooftop Garden & Terrace with **BOURBON AND BLUES ON THE ROOFTOP** for the next four Fridays starting September 28th from 5-9pm!

Finish your workday by sipping on specially priced Bourbon drinks at our full service cash bar, listen to the LIVE Blues tunes all while seeing the ultimate view of the city from the Rooftop Garden & Terrace!

GH
GALT HOUSE HOTEL
The Heart of Louisville

FourRoses



BOURBON

The Garvin Gate Neighborhood Association
Councilman David James - Louisville Metro Government
Present the 17th, 2012

Garvin Gate Blues Festival

OCTOBER 12 & 13 OAK ST @ GARVIN PL



Blues at the Gate

Friday, 6:30-11:15

- 6:30-7:00 SMOBLUES featuring Susan O'Neil
- 7:15-8:00 The Predators
- 8:30-9:15 Lamont Gillispie and 100 Proof
- 9:45-11:15 Sugar Ray and the Bluetones
- 8:00 & 9:15 Dust Radio
Pam Sasse Stage on Garvin Place



Sugar Ray

Saturday, 2:00-11:15

- 2:00-2:45 Dog House Kitchen
- 3:15-4:00 Little T&A
- 4:30-5:15 da Mudcats
- 5:45-6:30 The KingBees
- 7:00-7:45 G. Miles and the Hitmen
- 8:15-9:15 Tee Dee Young
- 9:45-11:15 Nora Jean Wallace
- 5:20, 6:35 & 7:50 Lazy Eleven
Pam Sasse Stage on Garvin Place



Nora Jean Wallace

FREE ADMISSION

garvingatebluesfestival.com



SIGN-A-RAMA
DOWNTOWN



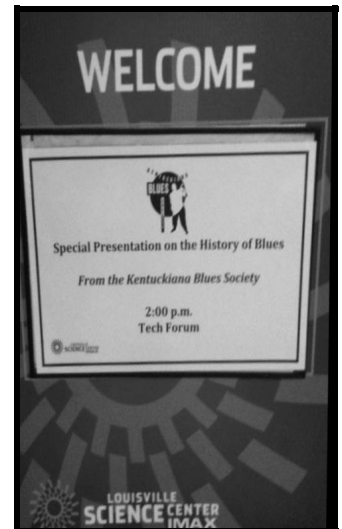
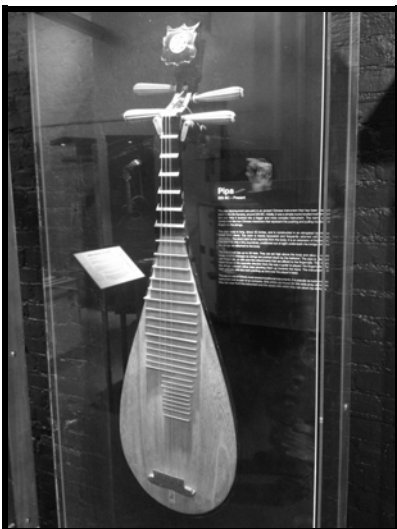
Franklin Law Group, PSC South Fourth Street Association St. James Court Association
Mike Suttles Kentuckiana Blues Society Reginald Meeks - KY State Representative
Don Keeling, Edward J Miller Insurance Sandy Richardson, Spruce Hill Nursery

Pam Sasse Daniel C Mason Agency The Rudyard Kipling Mary Martin, Semonin Realtors Michael Mawood, Re/Max Connections Doug Keller Lee Jones, Oak Street Hardware
Guitar Emporium Bob Bajandas Ginny Ehrlich, The Gallery at 133 Tom Isbel Van James Coin Laundry Old Town Wine and Spirits Jimmy's Quik Stop Waldman Liquors Dizzy Whiz
Hyland, Block, and Hyland Insurance Tom Kent - DC Productions Old Louisville Neighborhood Council Old Louisville Chamber of Commerce Dismas Charities, Inc



Earlier this year the Louisville Science Center featured a traveling exhibit from the National Guitar Museum entitled "Guitar: The Instrument that Rocked the World." The exhibit featured several types of well known guitars, hands-on displays that allowed users to understand the dynamics of the instrument and several historic stringed devices that predated today's guitars. Local photographer C. Michael Stewart had several portraits of blues and rock guitarist on display and an opening night ceremony featured performances by the Little T&A Trio and Lamont Gillispie & 100 Proof Blues. The KBS also gave a slide presentation in the Tech Forum on the history of the blues. You can find out more about the National Guitar Museum online at <http://www.nationalguitarmuseum.com/> and the Louisville Science Center at <http://www.louisvillescience.org/>.

Gary Sampson



Kentuckiana Blues Calendar

| Sunday | Monday | Tuesday | Wednesday | Thursday | Friday | Saturday |
|---|--|--|---|--|---|--|
| Sep-30 Chevy Chase Inn (Lexington) – Ronn Crowder 8:00 Pizza Place – Blues Jam 7:00 | Oct-1 John E's – Robbie Bartlett Puccini's Smiling Teeth Pizza (Lexington) – Ronn Crowder Stevie Ray's - Open Mic 9:00 Tee Dee's Blues & Jazz Club (Lexington) – Tee Dee Young Band and Friends 9:00 | 2 Jeff St Pub (Franklin IN) Blues Jam MEAT – Tuesday with Richard "Combread" Powell 9:00 Stevie Ray's - Blues Jam 9:00 | 3 Air Devils Inn – Acoustic Jam Cheapside Bar (Lexington) Blues Jam with Here for the Party Diamonds Pub (Barrett) – Blues Jam Jim Porters – Open Jam Pizza Place – KBS Board Meeting Volare – Robbie Bartlett Trio 7:30 Wick's Pizza (Baxter) – Screamin' John's Pickin' Party 9:00 | 4 Clifton Center – Afterbeat Festival With Taj Mahal / Tyrone Cotton Hideway Saloon – Charles Walker Band 10:00 Stevie Ray's – Thursday Night Down with Amy & Tony 9:00 Volare – Robbie Bartlett Trio 7:30 Wick's Pizza (Baxter) – Screamin' John's Pickin' Party 9:00 | 5 AmVets Post #9 – Dallas Cole Band Blue River Cafe (Milltown IN) – Big Poppa Stampley 7:00 Clifton Center – Afterbeat Festival with Tyrone Cotton Gerstle's Place – El Roostars / Dust Radio Jeff Ruby's – Robbie Bartlett 9:00 Jim Porter's – Bluestown 9:30 Kingfish (River Rd) – D Man & Alley Hounds Phoenix Hill – King Sonic Stevie Ray's – Travlin' Mojos / Louisville Blues 303 West (Danville) – Hubbard, McGee, Morley and Dice 8:30 | 6 Clifton Center – Afterbeat Festival Down River Bar & Grill (Sellersburg, IN) – Travlin' Mojos 10:00 Jim Porter's – Bluestown 9:30 King Pin Lanes – Dallas Cole Band Phoenix Hill – King Sonic Player's Pub (Bloomington, IN) – CD Release Party with Lamont Gillispie & 100 Proof Blues Stevie Ray's – Hoghead Blues 7:30 / The Boogie Men 10:30 Wick's Pizza (Hurstbourne) – The Tarnations |
| 7 Big Rock Jazz & Blues Festival Miss Lissa & Co / Dick Sisto & Steve Allee / Don Braden 2:00 Chevy Chase Inn (Lexington) – Ronn Crowder 8:00 Natasha's Bistro (Lexington) – Jorma Kaukonen 8:00 Phoenix Hill – Boogie Men 2:15 Pizza Place – Blues Jam 7:00 | 8 John E's – Robbie Bartlett Puccini's Smiling Teeth Pizza (Lexington) – Ronn Crowder Stevie Ray's - Open Mic 9:00 Tee Dee's Blues & Jazz Club (Lexington) – Tee Dee Young Band and Friends 9:00 | 9 Louisville Palace - ZZ Top 7:30 Jeff St Pub (Franklin IN) Blues Jam MEAT – Tuesday with Richard "Combread" Powell 9:00 Stevie Ray's - Blues Jam 9:00 | 10 Air Devils Inn – Acoustic Jam Cheapside Bar (Lexington) Blues Jam with Here for the Party Diamonds Pub (Barrett) – Blues Jam Jim Porters – Open Jam Volare – Robbie Bartlett Trio 7:00 | 11 Stevie Ray's – Thursday Night Down with Amy & Tony 9:00 Volare – Robbie Bartlett Trio 7:30 Wick's Pizza (Baxter) – Screamin' John's Pickin' Party 9:00 | 12 Cheapside Bar (Lexington) – Over The Top Clifton's Pizza – Juggernaut Jug Band 8:30 Garvin Gate Blues Festival – See ad this issue Jim Porter's – TBA RiRa Irish Pub – Robbie Bartlett 9:00 Stevie Ray's – Brian Elmore / The Tarnations Tiffany's (Madison IN) – Gary Applegate 9:00 Varden's (Paris) – Hubcat Trio | 13 Cheapside Bar (Lexington) – Over The Top Clifton's Pizza – Juggernaut Jug Band 8:30 Down River Bar & Grill (Sellersburg IN) – Holt Brothers Band Garvin Gate Blues Festival – See ad this issue Jeff St Pub (Franklin IN) – Shakehandlers BB Jim Porter's – TBA Mack Daddy's (Charlestown IN) – Dallas Cole Stevie Ray's – V-Groove 9:00 |
| 14 Chevy Chase Inn (Lexington) – Ronn Crowder 8:00 Kingfish (River Rd) – Kirk Davis Band 5:00 Pizza Place – Blues Jam 7:00 Stevie Ray's – Cabbage Patch Settlement House Benefit 4:00 Waterfront Park – Aids Walk with Robbie Bartlett 1:00 | 15 John E's – Robbie Bartlett Puccini's Smiling Teeth Pizza (Lexington) – Ronn Crowder Stevie Ray's - Open Mic 9:00 Tee Dee's Blues & Jazz Club (Lexington) – Tee Dee Young Band and Friends 9:00 | 16 Jeff St Pub (Franklin IN) Blues Jam MEAT – Tuesday with Richard "Combread" Powell 9:00 Stevie Ray's - Blues Jam 9:00 | 17 Air Devils Inn – Acoustic Jam Cheapside Bar (Lexington) Blues Jam with Here for the Party Diamonds Pub (Barrett) – Blues Jam Jim Porters – Open Jam Phoenix Hill – Lazy Eleven Volare – Robbie Bartlett Trio 7:00 | 18 Stevie Ray's – Thursday Night Down with Amy & Tony 9:00 Volare – Robbie Bartlett Trio 7:30 Wick's Pizza (Baxter) – Screamin' John's Pickin' Party 9:00 | 19 Blue River Cafe (Milltown IN) – Tyrone Cotton Captain's Quarters – D Man & Alley Hounds Gerstle's Place – Dog House Kitchen 8:00 Jeff Ruby's – Robbie Bartlett 9:00 Jim Porter's – Rock Bottom Blues 9:30 Richard's Grill (Versailles) – Ronn Crowder Stevie Ray's – Blue Meridian / Rare Breed Varden's (Paris) – Hubcat Quartet Zazoo's – Flood Water 9:00 | 20 Bullitt Co Fairgrounds – Bluestown Jeff Ruby's – Robbie Bartlett 9:00 Jim Porter's – Rock Bottom Blues 9:30 Parlay Social (Lexington) – Tee Dee Young Stevie Ray's – KingBees 7:30 / Mr. Jimmy 10:30 Wight-Meyer Winery (Shepherdsville) – da Mudcats 7:00 |
| 21 Chevy Chase Inn (Lexington) – Ronn Crowder 8:00 Expo Five – Rosie Ledet / Stray Cat Blues Band / Jaywalkers / Lazy Eleven 5:00 \$9/\$10 Kingfish (River Rd) – Kirk Davis Pizza Place – Blues Jam 7:00 Mojos' Boneyard (Evansville) - River Basin Blues Society Contest | 22 John E's – Robbie Bartlett Puccini's Smiling Teeth Pizza (Lexington) – Ronn Crowder Stevie Ray's - Open Mic 9:00 Tee Dee's Blues & Jazz Club (Lexington) – Tee Dee Young Band and Friends 9:00 | 23 Jeff St Pub (Franklin IN) Blues Jam MEAT – Tuesday with Richard "Combread" Powell 9:00 Stevie Ray's - Blues Jam 9:00 | 24 Air Devils Inn – Acoustic Jam Cheapside Bar (Lexington) Blues Jam with Here for the Party Diamonds Pub (Barrett) – Blues Jam Jim Porters – Open Jam Volare – Robbie Bartlett Trio 7:00 | 25 Stevie Ray's – Thursday Night Down with Amy & Tony 9:00 Volare – Robbie Bartlett Trio 7:30 Wick's Pizza (Baxter) – Screamin' John's Pickin' Party 9:00 | 26 Gerstle's Place – Mr. Jimmy Jim Porter's – Boogie Men / Bella Blue Band 9:30 Stevie Ray's – The Clark Band 9:00 | 27 Headliners Music Hall – The Wood Brothers Jeff St Pub (Franklin IN) – Shakehandlers BB Jim Porter's – Boogie Men / Bella Blue Band 9:30 Stevie Ray's – Rib Tip Kings 7:30 / Clay Street Blues All Stars 10:30 |
| 28 Chevy Chase Inn (Lexington) – Ronn Crowder 8:00 Pizza Place – Blues Jam 7:00 | 29 John E's – Robbie Bartlett Puccini's Smiling Teeth Pizza (Lexington) – Ronn Crowder Stevie Ray's - Open Mic 9:00 Tee Dee's Blues & Jazz Club (Lexington) – Tee Dee Young Band and Friends 9:00 | 30 Jeff St Pub (Franklin IN) Blues Jam MEAT – Tuesday with Richard "Combread" Powell 9:00 Stevie Ray's - Blues Jam 9:00 | 31 Air Devils Inn – Acoustic Jam Cheapside Bar (Lexington) Blues Jam with Here for the Party Diamonds Pub (Barrett) – Blues Jam Jim Porters – Open Jam Volare – Robbie Bartlett Trio 7:00 | Nov-1 Stevie Ray's – Thursday Night Down with Amy & Tony 9:00 Volare – Robbie Bartlett Trio 7:30 Wick's Pizza (Baxter) – Screamin' John's Pickin' Party 9:00 4th St Bar & Grill (Columbus IN) – Gary Applegate & Sal Barbera 8:00 | 2 Cheapside Bar (Lexington) – Dallas Cole Band Jeff Ruby's – Robbie Bartlett 9:00 Jim Porter's – River City Blues Band 9:30 Stevie Ray's – Tattoo Babylon 9:00 Tiffany's (Madison IN) – Gary Applegate 9:00 | 3 Cheapside Bar (Lexington) – Dallas Cole Band Gerstle's Place – V-Groove Jeff Ruby's – Robbie Bartlett 9:00 Jim Porter's – River City Blues Band 9:30 Sid's Pub (Sellersburg IN) – Gary Higdon Stevie Ray's – Old School 9:00 |

October 2012

**Kentuckiana Club Index—Show dates/times subject to change.
It's a good idea to call and check before hitting the road!**

- 4th Street Bar - 1810N. 4th Columbus IN - 614-291-1420
 Air Devils Inn - 2802 Taylorsville Rd - 454-4082
 AP Crafters - 1321 Herr Lane - 690-5000
 BBC - 3929 Shelbyville Rd - 899-7070
 Bearno's by the Bridge - 131 W Main - 584-7437
 Bearno's Highlands - 1318 Bardstown Rd - 456-4556
 Bearno's U of L - 1923 South 4th Street - 634-5155
 BJ's B&G - 1008 Commerce Blvd Bardstown KY - 502-348-5070
 Bluegrass Tavern - 2340 New Haven Rd Bardstown 348-2563
 Blue Mule - 10301 Taylorsville Rd - 240-0051
 Blue River Café - 128 W Main, Milltown IN - 812-633-7510
 Captains Quarters - 5700 Captains Quarters Rd - 228-1651
 Chateau Thomas Winery - 225 S. Van Buren, Nashville IN
 Cheapside B&G - 131 Cheapside - Lexington - 859-254-0046
 Check's Cafe - 1101 E Burnett - 637-9515
 Chevy Chase Inn - 833 E. Euclid Lex KY - 859-266-9422
 Clark's Lyndon Village Pub - 813 Lyndon Lane - 502-290-7334
 Clifton's Pizza - 2220 Frankfort Ave - 893-3730
 Corner Door - 222 Dundee Rd - 708-2885
 Cosmic Charlie's - 388 Woodland Ave Lexington - 859-309-9499
 Diamond's Pub - 630 Barret Ave -
 Down Under Cafe - 126 Park Place Covington KY - 859-261-9393
 Down River Bar & Grill - 7815 Hwy 311 Sellersburg - 812-246-5277
 Eagles Club - 3501 College Dr. Jtown - 267-9982
 El Nopal - 9473 Westport Rd - 327-6551
 Gerstle's Place - 3801 Frankfort Ave - 742-8616
 Haymarket Whiskey Bar - 331 East Market St - 442-0523
 Headliners - 1386 Lexington Rd - 584-8088
 Hideaway Saloon - 1607 Bardstown Rd - 485-0114
 Highland Taproom - 1279 Bardstown Rd - 459-2337
 Impeller's Pizza - 110 West Main - 589-4900
 Jazzyblu - 815 W. Market St - 992-3242
 Jeff Ruby's - 325 W Main St - 562-2789
 Jim Porter's - 2345 Lexington Rd - 452-9531
 Joey G's - 218 E. Main St Madison IN - 812-273-8862
 John E's - 3708 Bardstown Rd - 456-1111
 Johnny D's - 960 E. Maple St Jeffersonville - 283-0823
 Karen's Grill & Pub - 9424 Norton Commons Blvd - 327-5646
 Kingfish - 3021 Upper River Road - 895-0544
 Kingpin Lanes - 9525 Taylorsville Rd - 719-5464
 Lexington Public Library - 140 E Main St Lexington - 859-231-5500
 Lisa's Oak Street Lounge - 1004 E Oak St - 637-9315
 Mansion Hill Tavern - 502 Washington Av Newport - 859-581-0100

These supporters of the blues offer KBS members discounts (10% off at Mom's Music Mellwood, 10% off purchases at Jimmy's Music Center, \$1 off admission at Lisa's Oak Street Lounge and Stevie Ray's and free admission to select blues shows at Jim Porter's) with your current membership card. Give them your support! If you have another place where you get the blues, let us know and we'll see if they want to support the KBS.

Jimmy's Music Center - 123 East Market Street New Albany - 812-945-8044
Jim Porter's Good Time Emporium - 2345 Lexington Road - 502-452-9531
Lisa's Oak Street Lounge - 1004 East Oak Street - 637-9315
Mom's Music - 1900 Mellwood Avenue - 897-3304
Stevie Ray's Blues Bar - 230 East Main Street - 582-9945

Four Roses



BOURBON



JIMMY'S MUSIC CENTER



123 East Market Street
 New Albany IN 47130
 812-945-8044
www.jimmysmusiccenter.com

Little Boogaloo Entertainment
Greenville, MS
www.edenbrent.com

Diplo
OAK ST. LOUNGE

ALFRESCO PLACE

JEFF CARPENTER

(502) 459-4362

24 Track Digital Recording & Mastering



BisigImpactGroup
 Innovative. Integrated. Marketing.

Kentucky's Blues
 BOWLING GREEN, KY
www.kyblues.com



**THE KENTUCKIANA
BLUES SOCIETY
P.O. Box 755
LOUISVILLE, KY 40201-0755**

**NONPROFIT ORG.
U.S. POSTAGE
PAID
LOUISVILLE, KY
PERMIT NO. 490**

**KENTUCKIANA BLUES SOCIETY
Attn: Membership Director
P.O. Box 755
Louisville, KY 40201-0755**

Join the Kentuckiana Blues Society today! Single membership is only \$20 per year. As a member, you will receive the *Blues News* by mail and discounts at our sponsors and at selected KBS events. Dual membership (two people at the same address, two membership cards and one newsletter) is \$25 per year, and we offer a special band rate of \$30 per year, which includes one newsletter plus a membership card for each band member. We have also added a company membership for \$150, with up to 5 membership cards and one newsletter, plus your company logo featured in the *Blues News* and on our website, www.kbsblues.org. All KBS members who provide an email address will also receive the *KBS Blues News* weekly update email so you'll always know the latest developments. Support the BLUES by joining the KBS today! Join online at www.kbsblues.org, or fill out the coupon above and send with your payment to:

GET THE BLUES AND FEEL GOOD ABOUT IT!

YES! I WANT TO JOIN THE KENTUCKIANA BLUES SOCIETY TODAY!

| | | | |
|-------|--|-------------|-------|
| _____ | SINGLE MEMBERSHIP (\$20 ENCLOSED) | NAME(S) | _____ |
| _____ | DOUBLE MEMBERSHIP (\$25 ENCLOSED) | ADDRESS | _____ |
| _____ | BAND MEMBERSHIP (\$30 ENCLOSED) | CITY/ST/ZIP | _____ |
| _____ | COMPANY MEMBERSHIP (\$150 ENCLOSED) | E-MAIL | _____ |
| _____ | I would be willing to help out at KBS events | Telephone # | _____ |